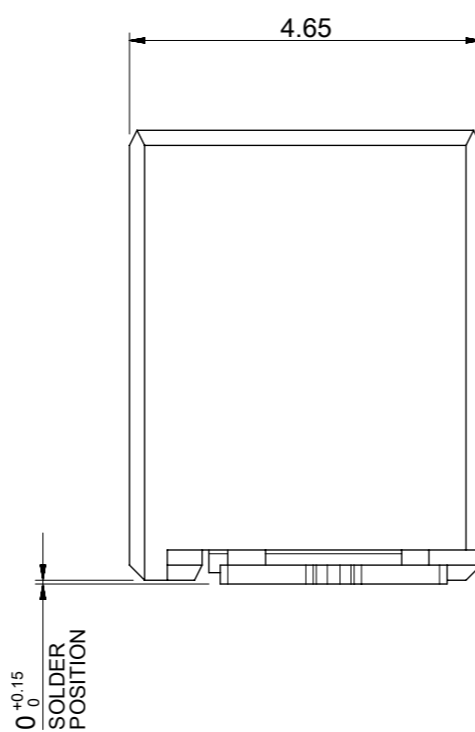
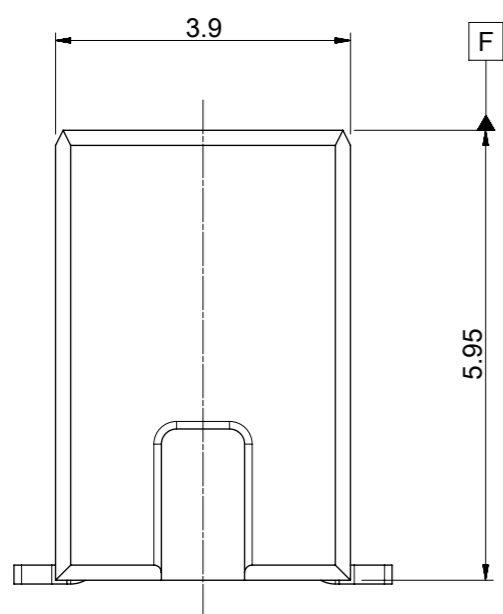
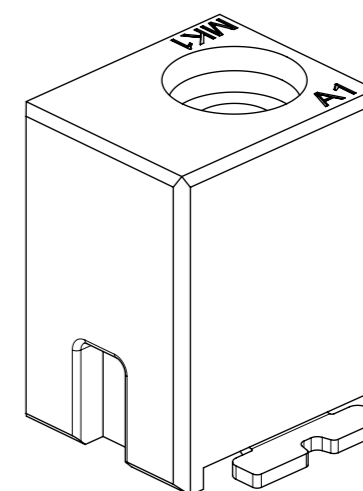
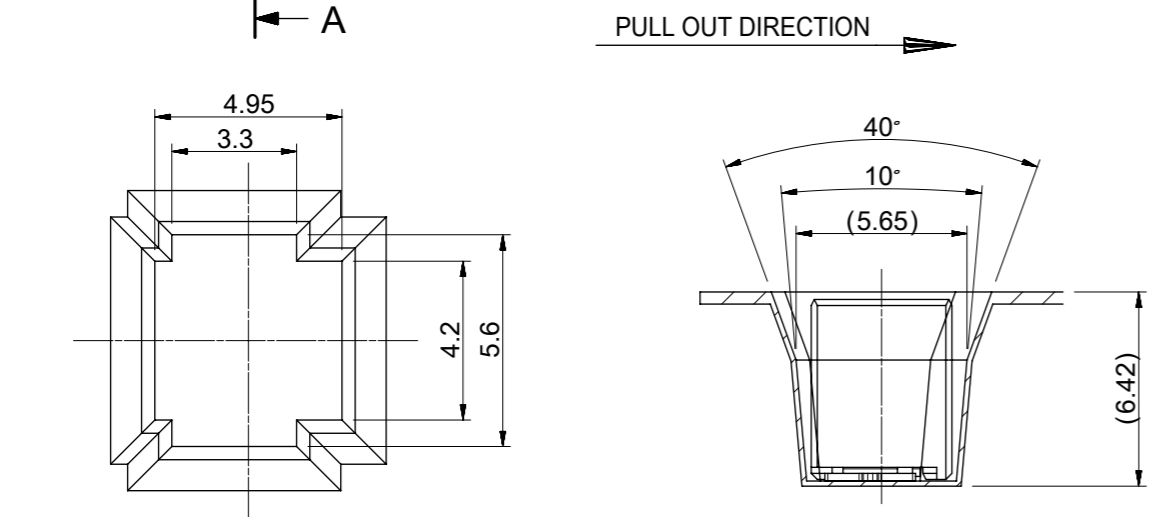
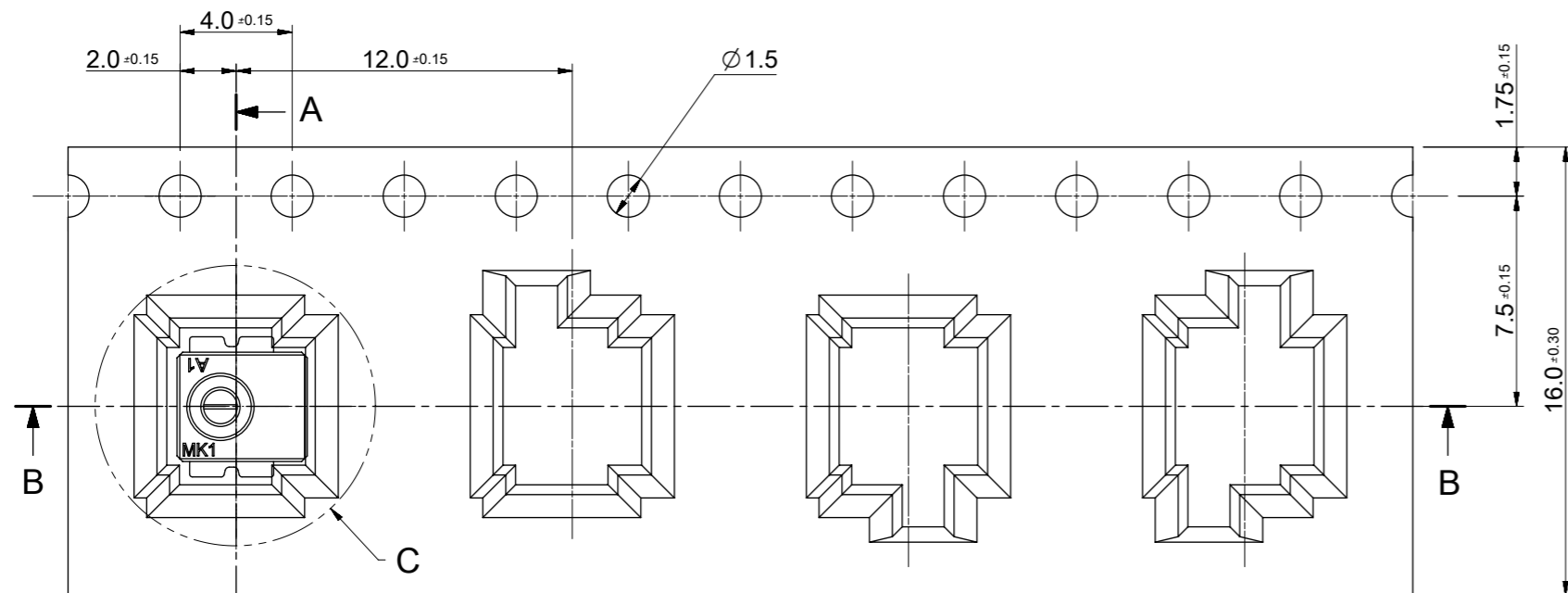


RECOMMENDED PCB LAYOUT
[GENERAL TOLERANCE ±0.05]



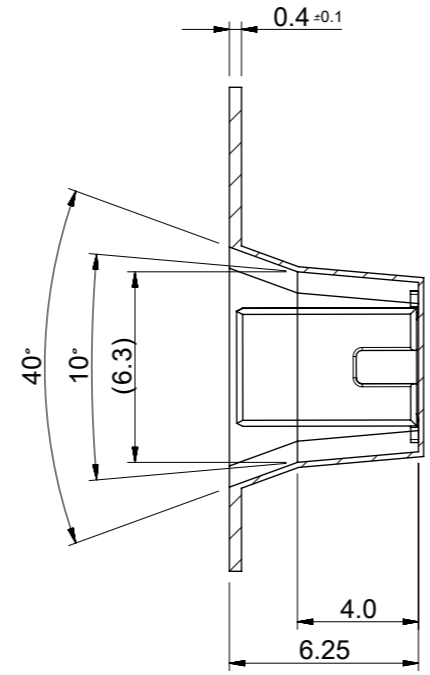
- NOTE
- MATERIAL
 - HEADER : LIQUID CRYSTAL POLYMER(LCP) UL94V-0, HALOGEN FREE, COLOR OF NATURAL
 - CONTACT TERMINAL : PHOSPHOR-BRONZE, 0.25mm THICKNESS
 - PLATING
 - CONTACT TERMINAL : PRE-TIN PLATED 0.8µm MINIMUM TIN OVER
 - PRODUCT SPECIFICATION : 2023940110
 - COPLANALITY OF SOLDER TAILS (PEAK TEMP. : 260°C), BEFORE & AFTER REFLOW : 0.08 MAX.
 - APPLICABLE SOLID WIRE RANGE : (OUTSIDE WIRE INSULATION : 2.2mm DIAMETER MAX.)
 - SOLID WIRE : AWG #18

THIS DRAWING CONTAINS INFORMATION THAT IS PROPRIETARY TO MOLEX ELECTRONIC TECHNOLOGIES, LLC AND SHOULD NOT BE USED WITHOUT WRITTEN PERMISSION											
QUALITY SYMBOLS	EC NO: 122327 DRWN: JSSHIN CHK'D: SHCHU APPR: YSKIM02	GENERAL TOLERANCES (UNLESS SPECIFIED)		DIMENSION UNITS	SCALE	 LITE-TRAP CONN. VERTICAL TYPE HEADER ASS'Y -1CKT					
		ANGULAR TOL ± 3.0 °		mm	10:1						
▽A = 0	A REV	4 PLACES ±	JSSHIN	DATE	2017/04/12						
▽E = 0		3 PLACES ±	CHK'D BY	DATE							
▽F = 0		2 PLACES ± 0.15	SHCHU	DATE	2017/09/22						
▽ = 0		1 PLACE ± 0.2	APPR BY	DATE	YSKIM02 2017/09/25						
▽C = 0		0 PLACES ±	DRAWING SIZE	THIRD ANGLE PROJECTION	A3						
▽ = 0		DRAFT WHERE APPLICABLE MUST REMAIN WITHIN DIMENSIONS									
▽ = 0							PRODUCT CUSTOMER DRAWING		GENERAL MARKET		
RELEASE STATUS P1		RELEASE DATE 25.09.2017 08:46:37		SERIES 202394		MATERIAL NUMBER 2023940110		DOCUMENT NUMBER 2023940110		CUSTOMER GENERAL MARKET	
				DOC TYPE PSD		DOC PART 000		SHEET NUMBER 1 OF 2			

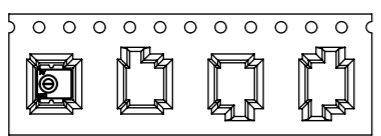


DETAIL C
SCALE 5:1

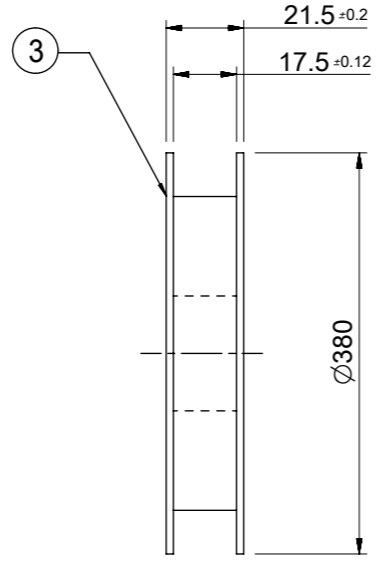
SECTION B-B



SECTION A-A



PULL OUT DIRECTION

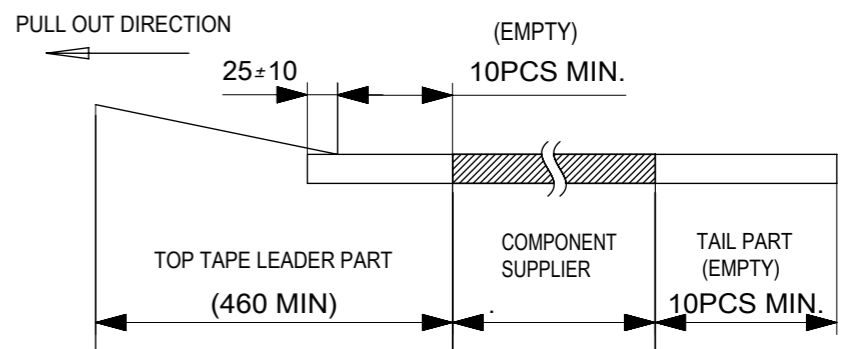


PLASTIC BOBBIN

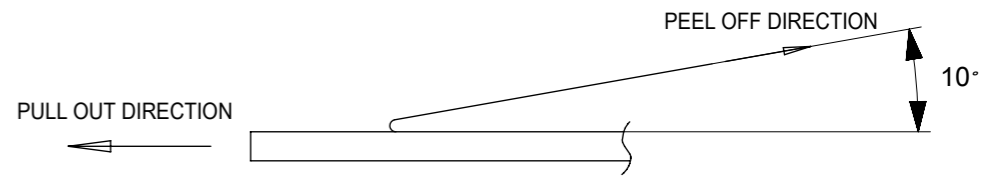
NOTES

1. NUMBER OF CONNECTORS : 1200 PCS/REEL.

2. LEAD TAPE LENGTH.



3. PEEL-OFF FORCE OF TOP TAPE : 0.1N~0.59N (10.2gf~60gf)
(PEELING DIRECTION AS SHOWN IN FOLLOWING FIG.)
<PEEL-OFF SPEED : 300mm/min (REF.)>



4. FLASH IN ANY PORTION SHOULD BE LESS THAN 0.20mm MAX.
5. UNLESS OTHERWISE SPECIFIED INNER R0.2 MAX

QUALITY SYMBOLS ▽A = 0 ▽E = 0 ▽F = 0 ▼ = 0 ▽C = 0 ⊗ = 0 ■ = 0 ▽ = 0	THIS DRAWING CONTAINS INFORMATION THAT IS PROPRIETARY TO MOLEX ELECTRONIC TECHNOLOGIES, LLC AND SHOULD NOT BE USED WITHOUT WRITTEN PERMISSION									
	2017/04/12	GENERAL TOLERANCES (UNLESS SPECIFIED)		DIMENSION UNITS	SCALE					
	2017/09/22	ANGULAR TOL ± 3.0 °		mm	4:1					
	2017/09/25	4 PLACES	±	DRWN BY	DATE	LITE-TRAP CONN. VERTICAL TYPE HEADER ASS'Y -1CKT				
		3 PLACES	±	JSSHIN	2017/04/12					
		2 PLACES	± 0.2	CHK'D BY	DATE	PRODUCT CUSTOMER DRAWING				
		1 PLACE	± 0.2	SHCHU	2017/09/22					
		0 PLACES	±	APPR BY	DATE	SERIES	MATERIAL NUMBER	CUSTOMER		
		DRAFT WHERE APPLICABLE MUST REMAIN WITHIN DIMENSIONS		YSKIM02	2017/09/25	202394	2023940110	GENERAL MARKET		
				DRAWING SIZE	THIRD ANGLE PROJECTION	DOCUMENT NUMBER		DOC TYPE	DOC PART	SHEET NUMBER
			A3		2023940110		PSD	000	2 OF 2	