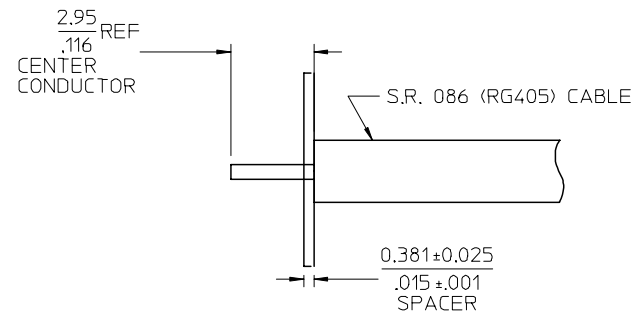
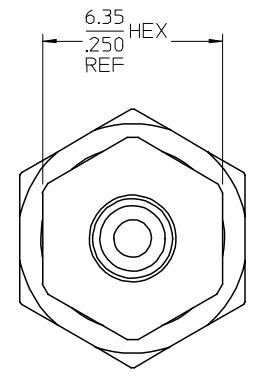
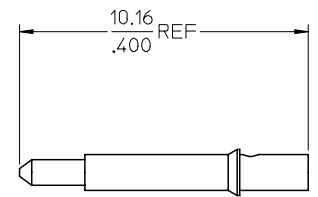
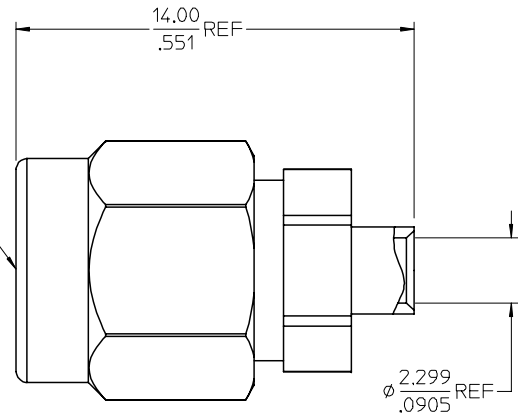
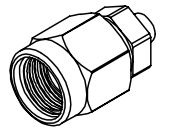


13 12 11 10 9 8 7 6 5 4 3 2 1

J  
I  
H  
G  
F  
E  
D  
C  
B  
A

MATERIALS AND FINISHES  
 BODY STAINLESS STEEL  
 PLATED GOLD (10 MICROINCHES MIN)  
 COUPLING NUT STAINLESS STEEL  
 PLATED PASSIVATED  
 CENTER CONTACT BRASS  
 PLATED GOLD (30 MICROINCHES MIN)  
 INSULATOR TEFLON  
 GASKET SILICONE RUBBER



RECOMMENDED STRIP DIMENSIONS  
 NOTE: MUST USE SPACER TO SOLDER  
 CENTER CONTACT TO CENTER  
 CONDUCTOR OF CABLE

MIL-STD-348A, FIG. 310.1	INTERFACE
SPECIFICATION	DESCRIPTION

PART # 73251-2430

UNLESS OTHERWISE SPECIFIED DIMS ARE MILLIMETERS AND ANGLES ARE DEGREES. ● ALL OVER. ● NO CHATTER OR NON-UNIFORM SURFACE FINISH ALLOWED. ● PARTS TO BE FREE OF BURRS & SHARP EDGES 0,13(,005) MAX BREAK. ● EXTERNAL THREADS TO BE ROLLED OR SINGLE POINT. ● DIAMETERS TO BE CONCENTRIC WITHIN 0,08(,003) TIR.	CHG: REDREW TO SHOW NEW CONT & STRIPPING CABLING INSTRS. CONTACT MAT'L WAS BERYLLIUM COPPER. EC NO: URF2005-0350 DRW: JARROBERTSON 2005/02/24 CHKD: SSHAH 2005/02/24 APPR: JMLENER 2005/02/27	QUALITY SYMBOLS 	GENERAL TOLERANCES (UNLESS SPECIFIED)		DIMENSION STYLE MM/IN		SCALE	DESIGN UNITS METRIC	THIRD ANGLE PROJECTION			
			4 PLACES	±	---	±	---	DRAWN BY TEF	DATE 2005/01/26	TITLE SMA PLUG, STR FOR RG405 50 OHMS, EWR-2409 SMA-PC		
			3 PLACES	±	---	±	---	CHECKED BY SSS	DATE 2005/01/26	MOLEX INCORPORATED		
			2 PLACES	±	---	±	---	APPROVED BY JDW	DATE 2005/01/26	MATERIAL NO. 732512430	DOCUMENT NO. SD-73251-243	SHEET NO. 1 OF 1
1 PLACE	±	---	±	---	ANGULAR ± 1 °		DRAFT WHERE APPLICABLE MUST REMAIN WITHIN DIMENSIONS					
THIS DRAWING CONTAINS INFORMATION THAT IS PROPRIETARY TO MOLEX INCORPORATED AND SHOULD NOT BE USED WITHOUT WRITTEN PERMISSION												

12 11 10 9 8 7 6 5 4 3 2 1