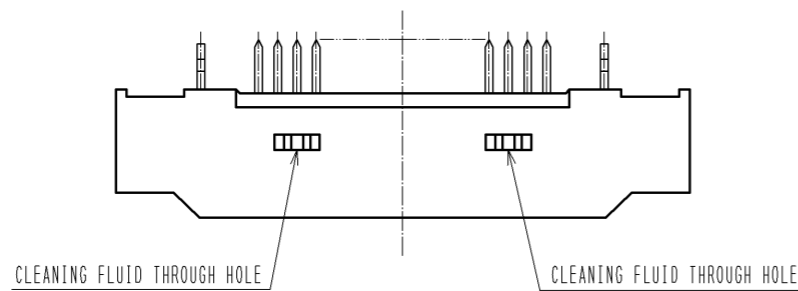
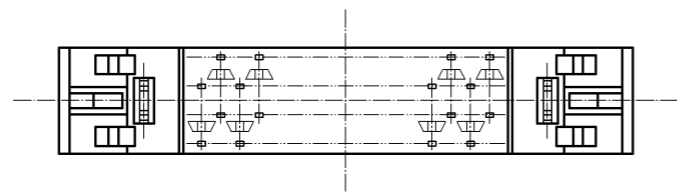
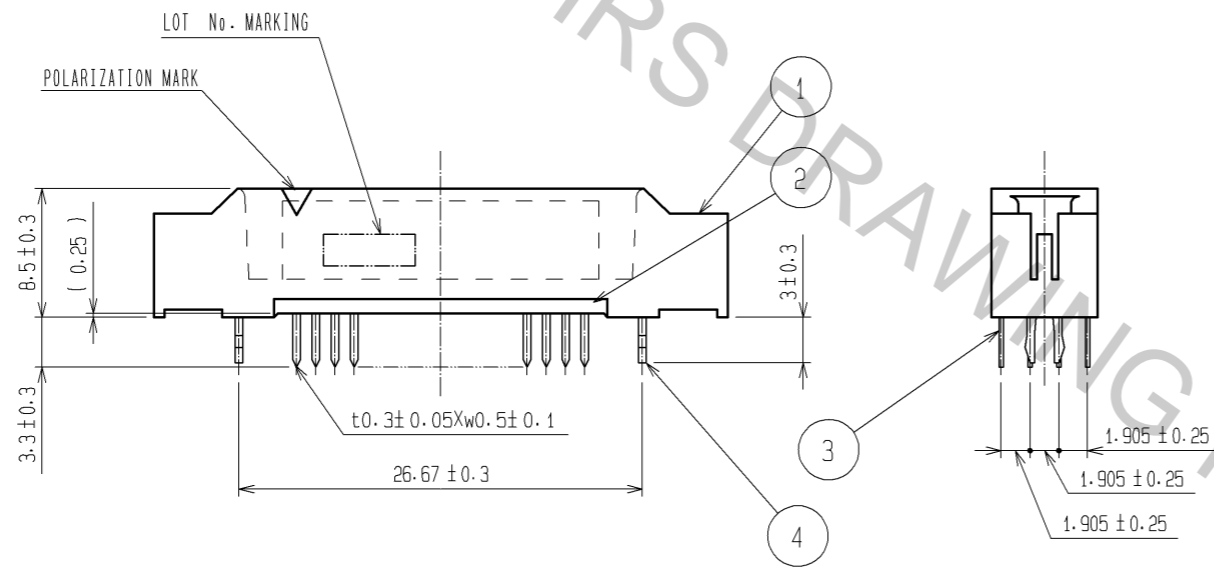
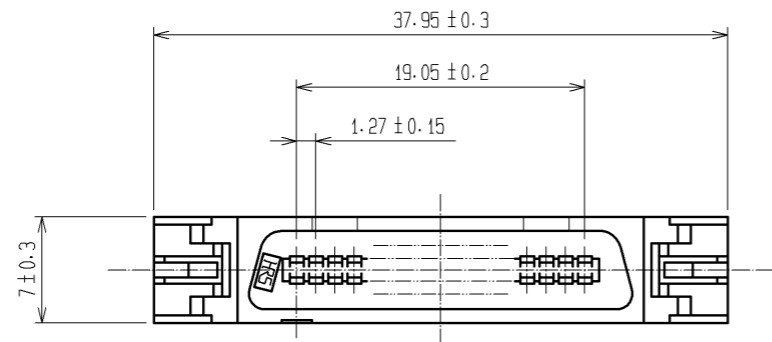
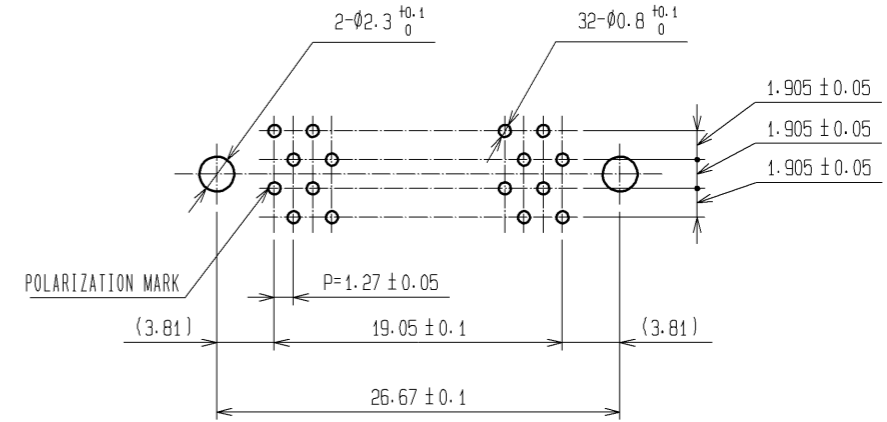


Apr.1.2017 Copyright 2017 HIROSE ELECTRIC CO., LTD. All Rights Reserved.



RECOMMENDED PC BOARD HOLE PATTERN(MOUNTING SIDE)

t=1.6



NOTE 1 THE DIMENSIONS IN PARENTHESES ARE FOR REFERENCE.

4	PHOSPHOR BRONZE	TIN-PLATING		3	PHOSPHOR BRONZE	CONTACT AREA:GOLD 0.2 μm min.		
1, 2	POLYAMIDE	BLACK UL94V-0				DIP AREA:TIN-PLATING 2μm min.		
						UNDER PLATING:NICKEL 2μm min.		
NO.	MATERIAL	FINISH .	REMARKS	NO.	MATERIAL	FINISH .	REMARKS	
UNITS	mm	SCALE	2 : 1	COUNT	DESCRIPTION OF REVISIONS	DESIGNED	CHECKED	DATE
HIROSE ELECTRIC CO., LTD.		APPROVED :	HS. OKAWA	10.02.08	DRAWING NO. EDC3-083535-21			
		CHECED :	HT. YAMAGUCHI	10.02.08	PART NO. FX2BA-32P-1.27DSAL(71)			
		DESIGNED :	SY. KAMIGA	10.02.05	CODE NO. CL572-0952-0-71			
		DRAWN :	HK. SUNADORI	10.02.05				